



**RHODES**  
THE NEW CAPITAL



FROM  
**RHODES**  
WITH  
**LOVE**

**A**t Plaza Gardens we believe that “the credibility and the good reputation in a competitive market are the best long-term business plan for us”.

So From day one we recognize that we play an important role in providing solutions for a better life, through the honest consultant service, guarantee the legal rights and many other benefits such as (Payment methods – Payment facilities – Variety of the projects)  
To help our clients in achieving their dream to live a better life





**RHODES**  
THE NEW CAPITAL

WELCOME TO A LIFE  
OF LUXURY

A NEW WORLD AWAITS YOU



## SET IN CAPITAL'S PRESTIGIOUS AREA

Rhodes is situated in highly desirable and exclusive district of new Capital

-The neighborhood is near to:

Diplomatic district

Al Masa hotel

Governmental district

Opera house

Conference center

- 10 minutes from the national ring road.





## WHERE TO GO...

Spearheading progressive development  
and at the very heart of commercial innovation.

**PROJECT AREA**  
419,000 M2

**APARTMENTS**  
3850 UNITS

**VILLA**  
360 VILLAS

**SHOPPING MALL**  
32,000 M2

**DYNAMIC LAKE**  
(WATER TRAVELLATOR)  
2100 M

**SPORT CLUB**  
35,000 M2





## • RHODES CLUB

The club area is 35,000 square meters to include indoor/outdoor sports courts, such as (Soccer – Basketball - Volleyball – Handball - 2 Squash court - 2 Tennis court )





## • RHODES CLUB

The club area is 35,000 square meters to include indoor/outdoor sports courts, such as (Soccer – Basketball - Volleyball – Handball - 2 Squash court - 2 Tennis court )





**RHODES**  
THE NEW CAPITAL

## • RHODES CLUB

( Indoor Olympic swimming pool for ladies - Children's pool). Addition to, the vast green parks, children's amusement park, banquet halls, restaurants, cafes and many other Facilities include gym, sauna, spa, jacuzzi, cinema and 40 Shops.



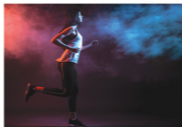




**RHODES**  
THE NEW CAPITAL

## • RHODES CLUB

- Fully equipped gym with latest technology
- Have a Cozy Time in Pampering Your Body and Soul at Rhodes Health Club & SPA
- Social club





RHODES  
THE NEW CAPITAL

• RHODES CLUB  
HEALTH CARE





**RHODES**  
THE NEW CAPITAL

ENJOY YOUR DAY  
IN THE MOST  
BEAUTIFUL GARDENS  
WITHIN  
RHODES COMPOUND



**WALK AND  
BIKE TRACK**



## KIDS AREA



## • RHODES MALL

Rhodes mall has more than 280 retails

If you are looking forward to some amazing shopping and leisure activities, it is all about Rhodes Mall come and enjoy!



Rhodes Mall is built on an area of 32000m in a prime location (R7) in New Cairo Capital in front of the artificial wave lake. The mall consists of 3 floors and underground parking of only two levels to host more than 1,200 vehicles. The mall includes 280 Stores of the top big world brands. Also, includes comprehensive medical facility, restaurants, cafes, cinema, theatre and children's amusement park.





## • SHOPPING MALL







Rhodes mall area is 32,000 square meter  
Direct access from two main streets in the new capital  
Direct access from diplomatic district





**RHODES**  
THE NEW CAPITAL

• **RHODES MALL**  
Ground Floor Plan


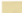




-  SHOPS
-  ELEC. ROOM & LC. ROOM
-  SHAFTS
-  STAIRS & ELEVATORS
-  BATHROOM
-  CORRIDOR





**RHODES**  
THE NEW CAPITAL

• **RHODES MALL**  
First Floor Plan

-  SHOPS
-  ELEC. ROOM & LC. ROOM
-  SHAFTS
-  STAIRS & ELEVATORS
-  BATHROOM
-  CORRIDOR













**RHODES**  
THE NEW CAPITAL

• **RHODES MALL**  
Second Floor Plan

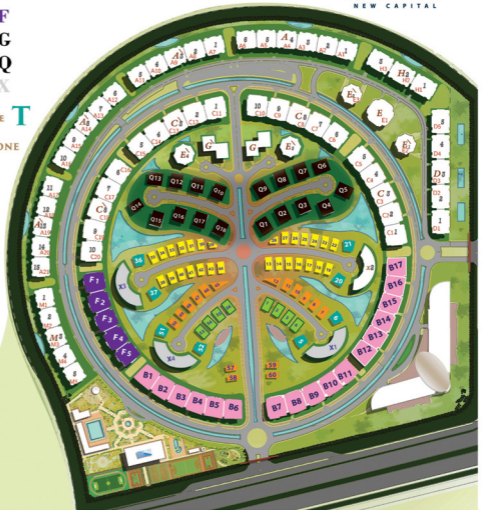
-  SHOPS
-  ELEC. ROOM & LC. ROOM
-  SHAFTS
-  STAIRS & ELEVATORS
-  BATHROOM
-  CORRIDOR





RHODES  
NEW CAPITAL

-  TYPE A
-  TYPE B
-  TYPE C
-  TYPE D
-  TYPE F
-  TYPE G
-  TYPE Q
-  TYPE X
-  TWINHOUSE T
-  VILLA STAND ALONE
-  V 458
-  V 576
-  V 700



# TYPE A APARTMENT

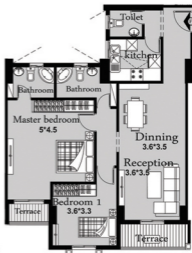


## TYPICAL FLOOR

BEDROOMS - 3 .. BATHROOMS - 3



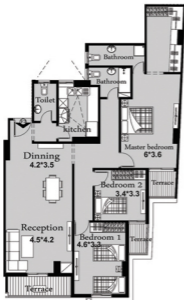
GROSS AREA 127 : 133 SQ.M



-All materials, dimensions & drawings are approximate.  
-Information is subject to change without notice  
- Actual suite area may vary from the stated area

-Drawing not to scale  
- The developer reserves the rights to make revisi  
without any liability whatsoever

# TYPE A APARTMENT

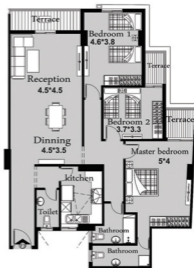


GROSS AREA 188 : 197 SQ.M



# TYPICAL FLOOR

BEDROOMS - 2 .. BATHROOMS - 3



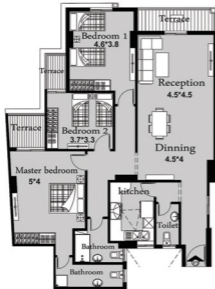
GROSS AREA 189 : 199 SQ.M



-All materials,dimensions & drawings are approximate.  
 -Information is subject to change without notice  
 - Actual suite area may vary from the stated area

-Drawing not to scale  
 - The developer reserves the rights to make revisions/alterations without any liability whatsoever

# TYPE A APARTMENT

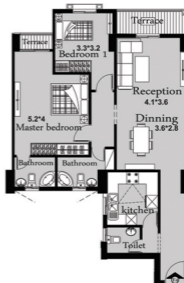


GROSS AREA 189 : 200 SQ.M



# TYPICAL FLOOR

BEDROOMS - 3 .. BATHROOMS - 3



GROSS AREA 135 : 137 SQ.M



-All materials, dimensions & drawings are approximate.  
 -Information is subject to change without notice  
 -Actual suite area may vary from the stated area

-Drawing not to scale  
 -The developer reserves the rights to make revisions/alterations  
 without any liability whatsoever

# TYPE B APARTMENT



## TYPICAL FLOOR

BEDROOMS - 3 , BATHROOMS - 3



GROSS AREA 244 SQ.M



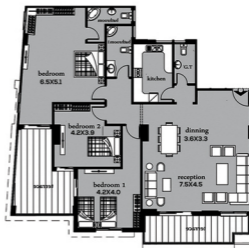
-All materials, dimensions & drawings are approximate.  
 -Information is subject to change without notice  
 - Actual suite area may vary from the stated area

-Drawing not to scale  
 - The developer reserves the rights to make revisions/alterations without any liability whatsoever

# TYPE B APARTMENT

## TYPICAL FLOOR

BEDROOMS - 3 .. BATHROOMS - 3



GROSS AREA 237 : 239 SQ.M

GROSS AREA 249 SQ.M

-All materials, dimensions & drawings are approximate.  
 -Information is subject to change without notice  
 -Actual suite area may vary from the stated area

-Drawing not to scale  
 -The developer reserves the rights to make revisions/alterations  
 without any liability whatsoever

# TYPE C APARTMENT

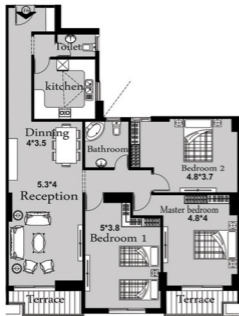


-All materials, dimensions & drawings are approximate.  
 -Information is subject to change without notice  
 - Actual suite area may vary from the stated area

-Drawing not to scale  
 - The developer reserves the rights to make revisions, alterations  
 without any liability whatsoever



# TYPE C APARTMENT



## TYPICAL FLOOR

BEDROOMS - 3 .. BATHROOMS - 2

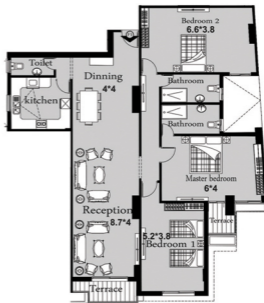
GROSS AREA 187 SQ.M



-All materials,dimensions & drawings are approximate.  
-Information is subject to change without notice  
- Actual suite area may vary from the stated area

## TYPICAL FLOOR

BEDROOMS - 3 .. BATHROOMS - 3

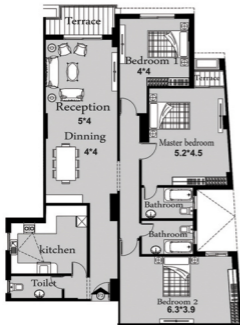


GROSS AREA 234 : 243 SQ.M



-Drawing not to scale  
- The developer reserves the rights to make revisions/alterations  
without any liability whatsoever

# TYPE C APARTMENT



## TYPICAL FLOOR

BEDROOMS - 3 .. BATHROOMS - 3

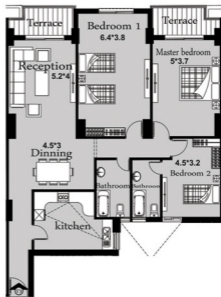
GROSS AREA 217 : 227 SQ.M



-All materials,dimensions & drawings are approximate.  
-Information is subject to change without notice  
- Actual suite area may vary from the stated area

## TYPICAL FLOOR

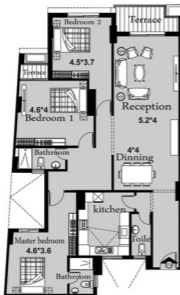
BEDROOMS - 3 .. BATHROOMS - 2



GROSS AREA 193 SQ.M

-Drawing not to scale  
- The developer reserves the rights to make revisions/alterations  
without any liability whatsoever

## TYPE C APARTMENT



## TYPICAL FLOOR

BEDROOMS - 3 .. BATHROOMS - 3

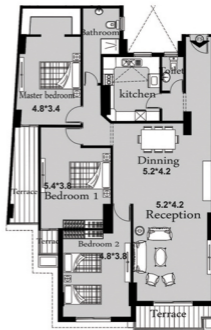
GROSS AREA 196 : 204 SQ.M



-All materials,dimensions & drawings are approximate.  
-Information is subject to change without notice  
- Actual suite area may vary from the stated area

## TYPICAL FLOOR

BEDROOMS - 3 .. BATHROOMS - 2



GROSS AREA 214 SQ.M



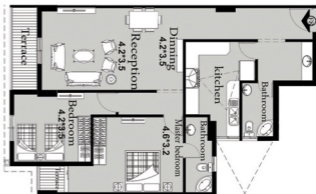
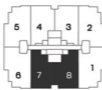
- Drawing not to scale  
- The developer reserves the rights to make revisions/alterations  
without any liability whatsoever

# TYPE D APARTMENT



## TYPICAL FLOOR

BEDROOMS - 3 .. BATHROOMS - 2

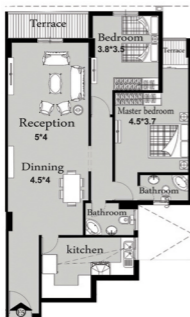


GROSS AREA 148 SQ.M

-All materials, dimensions & drawings are approximate.  
-Information is subject to change without notice  
-Actual suite area may vary from the stated area

-Drawing not to scale  
-The developer reserves the rights to make revisions/alterations without any liability whatsoever

# TYPE D APARTMENT



GROSS AREA 146 : 147 SQ.M

# TYPICAL FLOOR

BEDROOMS - 3 .. BATHROOMS - 3



GROSS AREA 180 : 181 SQ.M

-All materials,dimensions & drawings are approximate.  
-Information is subject to change without notice  
- Actual suite area may vary from the stated area

-Drawing not to scale  
- The developer reserves the rights to make revisions/alterations  
without any liability whatsoever



## TYPE F

DUPLEX  
APARTMENT



### TYPICAL FLOOR

### DUPLEX



-All materials, dimensions & drawings are approximate.  
-Information is subject to change without notice  
-Actual suite area may vary from the stated area

-Drawing not to scale  
-The developer reserves the rights to make revisions/alterations  
without any liability whatsoever

# F

## TYPE

## TYPICAL FLOOR

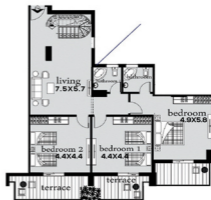
## DUPLEX



GROSS AREA 361 SQ.M



GROSS AREA 364 SQ.M



-All materials, dimensions & drawings are approximate.  
 -Information is subject to change without notice  
 - Actual suite area may vary from the stated area

-Drawing not to scale  
 - The developer reserves the rights to make revisions/alterations without any liability whatsoever

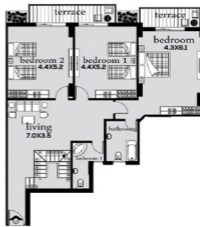
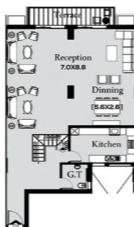
# TYPE F

## TYPICAL FLOOR

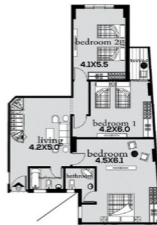
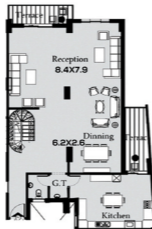
## DUPLEX



GROSS AREA 370 SQ.M



GROSS AREA 371 SQ.M



-All materials,dimensions & drawings are approximate.  
 -Information is subject to change without notice  
 -Actual suite area may vary from the stated area

-Drawing not to scale  
 -The developer reserves the rights to make revisions/alterations without any liability whatsoever



TYPE

F

TYPICAL FLOOR

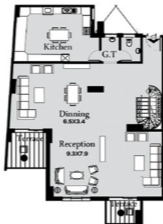
DUPLEX



GROSS AREA 397 SQ.M



GROSS AREA 416 SQ.M



-All materials,dimensions & drawings are approximate.  
 -Information is subject to change without notice  
 - Actual suite area may vary from the stated area

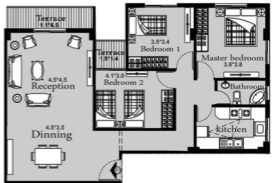
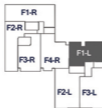
-Drawing not to scale  
 - The developer reserves the rights to make revisions/alterations  
 without any liability whatsoever



## TYPE **G** - Left APARTMENT

### TYPICAL FLOOR

BEDROOMS - 3 .. BATHROOMS - 1

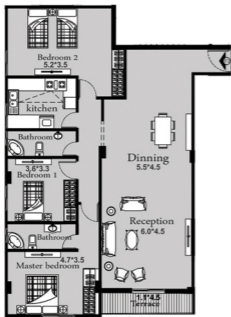


GROSS AREA 148 SQ.M

-All materials, dimensions & drawings are approximate.  
-Information is subject to change without notice  
- Actual suite area may vary from the stated area

-Drawing not to scale  
- The developer reserves the rights to make revisions/alterations  
without any liability whatsoever

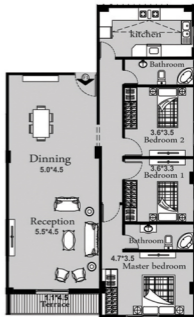
# TYPE G - Left APARTMENT



GROSS AREA 186 SQ.M

# TYPICAL FLOOR

BEDROOMS - 3 .. BATHROOMS - 2

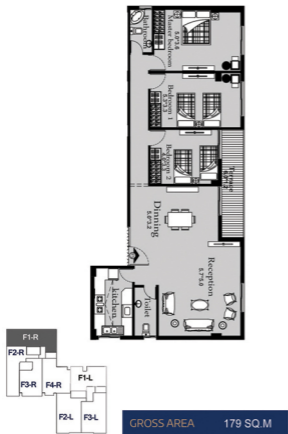


GROSS AREA 175 SQ.M

-All materials,dimensions & drawings are approximate.  
-Information is subject to change without notice  
- Actual suite area may vary from the stated area

-Drawing not to scale  
- The developer reserves the rights to make revisions/alterations without any liability whatsoever

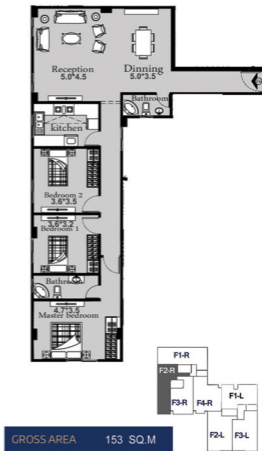
# TYPE G- Right APARTMENT



-All materials, dimensions & drawings are approximate.  
-Information is subject to change without notice  
-Actual suite area may vary from the stated area

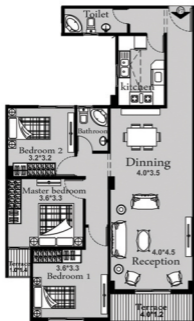
# TYPICAL FLOOR

BEDROOMS - 3 .. BATHROOMS - 2



-Drawing not to scale  
-The developer reserves the rights to make revisions, alterations without any liability whatsoever

# TYPE G- Right APARTMENT



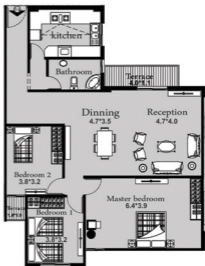
GROSS AREA 140 SQ.M



- All materials,dimensions & drawings are approximate.
- Information is subject to change without notice
- Actual suite area may vary from the stated area

# TYPICAL FLOOR

BEDROOMS - 3 .. BATHROOMS - 2



GROSS AREA 170 SQ.M



- Drawing not to scale
- The developer reserves the rights to make revisions/alterations without any liability whatsoever

# TYPE Q APARTMENT



## TYPICAL FLOOR

BEDROOMS - 3 .. BATHROOMS - 2



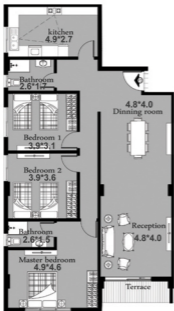
GROSS AREA 198 SQ.M



-All materials, dimensions & drawings are approximate.  
-Information is subject to change without notice  
-Actual suite area may vary from the stated area

-Drawing not to scale  
-The developer reserves the rights to make revisions/alterations without any liability whatsoever

# TYPE Q APARTMENT



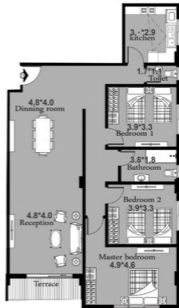
GROSS AREA 184 SQ.M



-All materials, dimensions & drawings are approximate.  
 -Information is subject to change without notice  
 -Actual suite area may vary from the stated area

# TYPICAL FLOOR

BEDROOMS - 3 .. BATHROOMS - 2

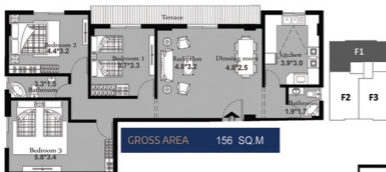


GROSS AREA 182 SQ.M



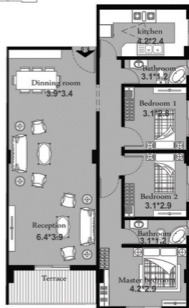
-Drawing not to scale  
 -The developer reserves the rights to make revisions/alterations without any liability whatsoever

# TYPE Q APARTMENT



# TYPICAL FLOOR

BEDROOMS - 3 .. BATHROOMS - 2



-All materials, dimensions & drawings are approximate.  
-Information is subject to change without notice  
-Actual suite area may vary from the stated area

-Drawing not to scale  
-The developer reserves the rights to make revisions/alterations without any liability whatsoever



# TYPE X APARTMENT



## TYPICAL FLOOR

BEDROOMS - 4 .. BATHROOMS - 3



GROSS AREA 226 SQ.M

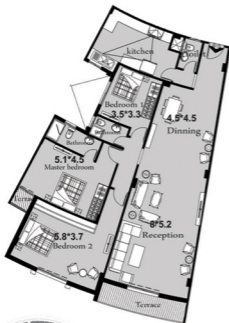
-All materials, dimensions & drawings are approximate.  
 -Information is subject to change without notice  
 -Actual suite area may vary from the stated area

-Drawing not to scale  
 -The developer reserves the rights to make revisions/alterations without any liability whatsoever

# TYPE X APARTMENT

## TYPICAL FLOOR

BEDROOMS - 3 .. BATHROOMS - 3



GROSS AREA 231 SQ.M



GROSS AREA 230 SQ.M

-All materials, dimensions & drawings are approximate.  
-Information is subject to change without notice  
-Actual suite area may vary from the stated area

-Drawing not to scale  
-The developer reserves the rights to make revisions/alterations without any liability whatsoever

# TYPE X APARTMENT

## TYPICAL FLOOR

BEDROOMS - 3 . BATHROOMS - 3



GROSS AREA 221 SQ.M



GROSS AREA 226 SQ.M



-All materials,dimensions & drawings are approximate.  
-Information is subject to change without notice  
-Actual suite area may vary from the stated area

-Drawing not to scale  
-The developer reserves the rights to make revisions/alterations without any liability whatsoever



VILLA

STAND ALONE



**MODEL A**  
**VILLA STAND ALONE**



**BASEMENT**

AREA 212 m<sup>2</sup>



**GROUND FLOOR**

AREA 212 m<sup>2</sup>



**FIRST FLOOR**

AREA 223 m<sup>2</sup>



**GROSS AREA 700 SQ.M**

- All materials, dimensions & drawings are approximate.
- Information is subject to change without notice
- Actual suite area may vary from the stated area
- Drawing not to scale
- The developer reserves the rights to make revisions/alterations without any liability whatsoever



**ROOF FLOOR**

AREA 53 m<sup>2</sup>

# MODEL B

## VILLA STAND ALONE



**BASEMENT**  
AREA 174 m<sup>2</sup>



**GROUND FLOOR**  
AREA 174 m<sup>2</sup>



**FIRST FLOOR**  
AREA 184 m<sup>2</sup>



**GROSS AREA 576 SQ.M**

- All materials,dimensions & drawings are approximate.
- Information is subject to change without notice
- Actual suite area may vary from the stated area
- Drawing not to scale
- The developer reserves the rights to make revisions/alterations without any liability whatsoever



**ROOF FLOOR**  
AREA 44 m<sup>2</sup>

# MODEL C VILLA STAND ALONE



**BASEMENT**

AREA 138 m<sup>2</sup>



**GROUND FLOOR**

AREA 138 m<sup>2</sup>



**FIRST FLOOR**

AREA 147 m<sup>2</sup>



**GROSS AREA 458 SQ.M**

- All materials,dimensions & drawings are approximate.
- Information is subject to change without notice
- Actual suite area may vary from the stated area
- Drawing not to scale
- The developer reserves the rights to make revisions/alterations without any liability whatsoever



**ROOF FLOOR**

AREA 35 m<sup>2</sup>



**TWINHOUSE**

VILLA ATTACHED

**T**

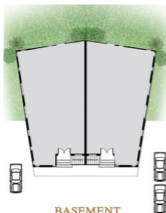




# TWINHOUSE

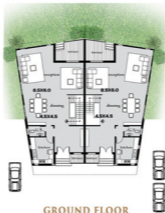
## VILLA ATTACHED

# T



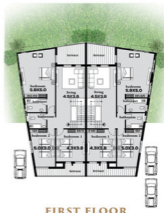
**BASEMENT**

AREA 124 m<sup>2</sup>



**GROUND FLOOR**

AREA 124 m<sup>2</sup>



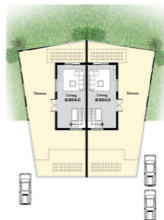
**FIRST FLOOR**

AREA 134 m<sup>2</sup>



**GROSS AREA** 413 SQ.M

- All materials,dimensions & drawings are approximate.
- Information is subject to change without notice
- Actual suite area may vary from the stated area
- Drawing not to scale
- The developer reserves the rights to make revisions,alterations without any liability whatsoever



**ROOF FLOOR**

AREA 31 m<sup>2</sup>

developed by

**P** PLAZA  
GARDENS  
DEVELOPMENTS

Hotline : 15156

Mail : [info@plazagardens.com](mailto:info@plazagardens.com)

Website : [www.plazagardens.com](http://www.plazagardens.com)

Address : 2 AL Mesaha Square, Dokki, Giza